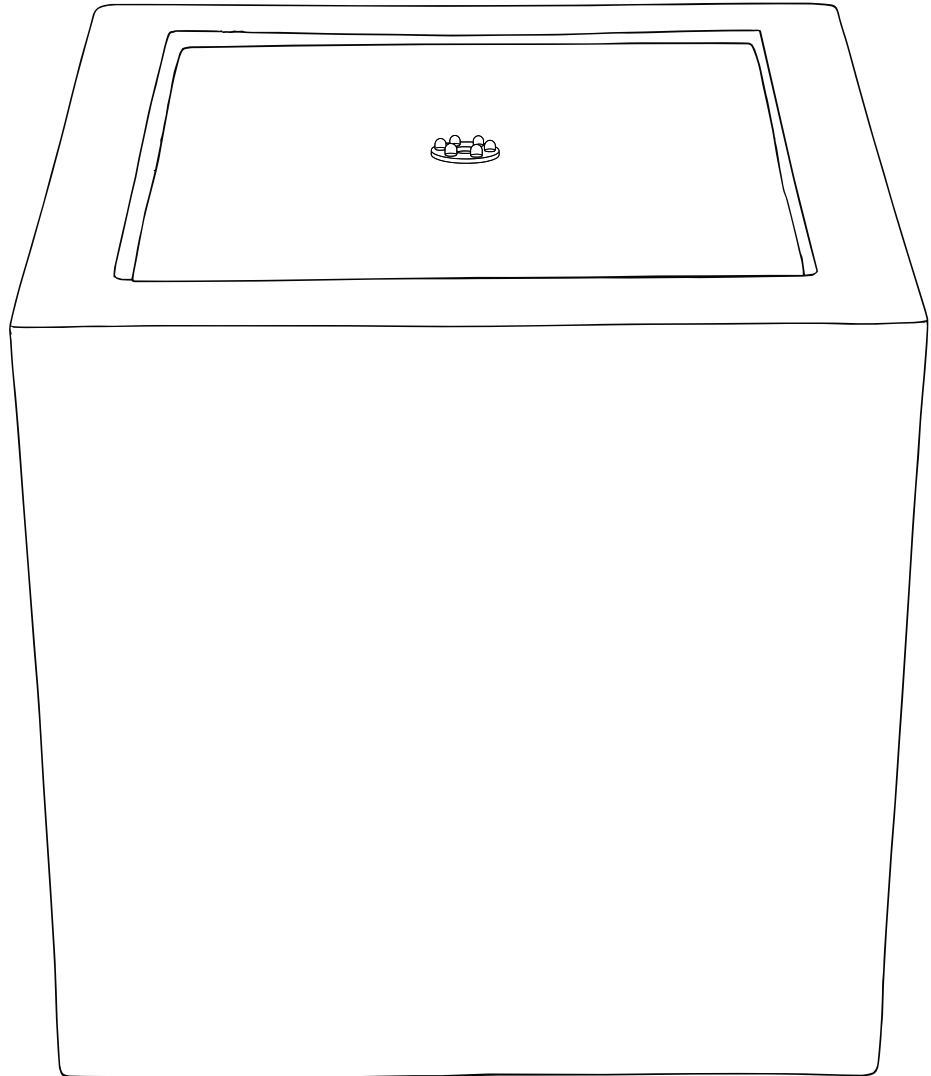
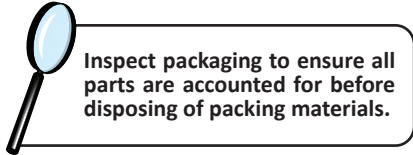


# BUBBLE FOUNTAIN WITH LED LIGHTS GP-7351

Review all assembly and care information before using this product. Save this manual for future reference.  
**Select a smooth, level surface to place the fountain.**  
**Assemble components on a soft, clean surface to avoid scratching or damaging the finish.**

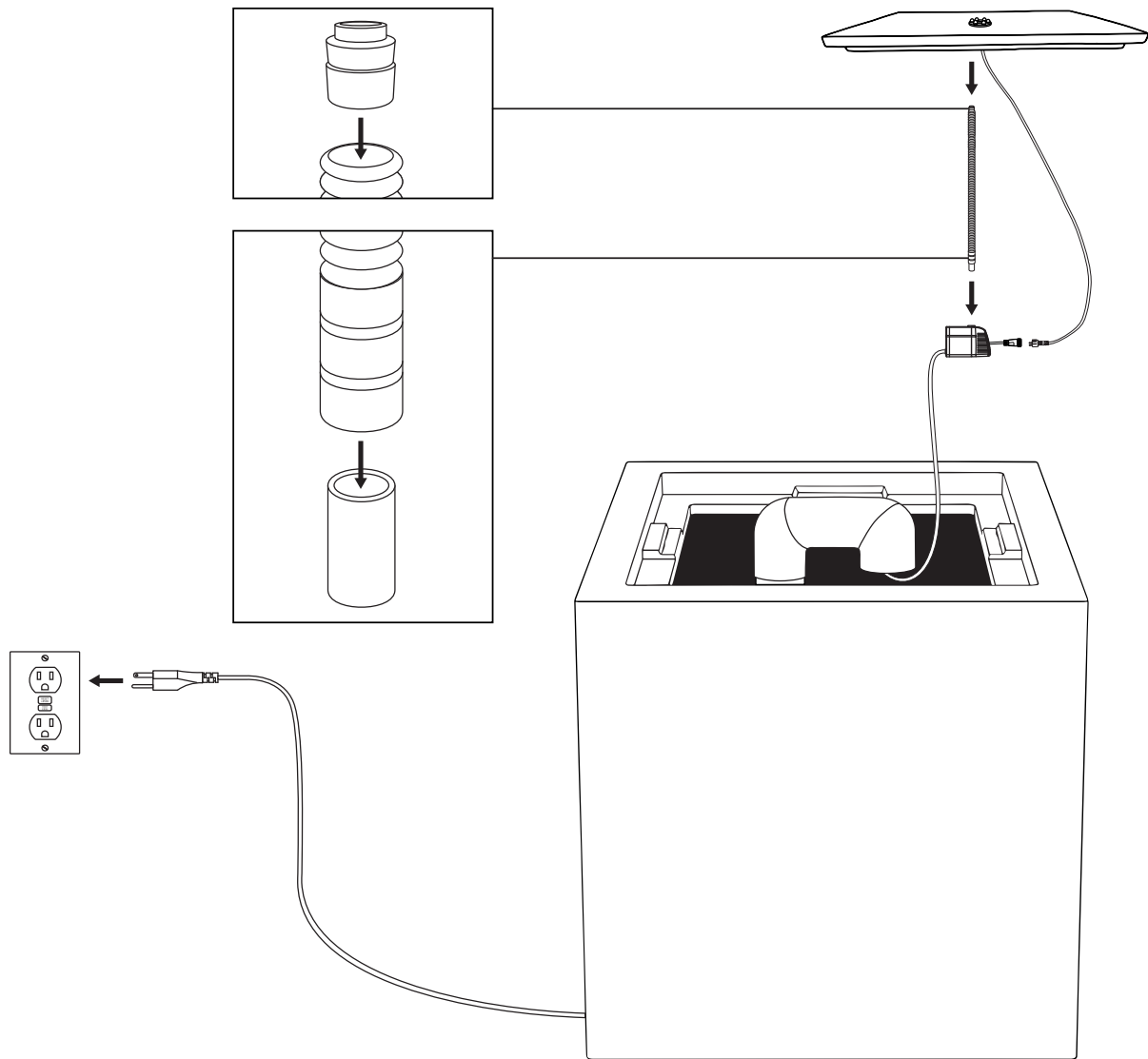


PARTS	QTY.
Fountain Basin	1
Fountain Lid	1
Electric Submersible Pump	1
LED Light	1
Water Hose	1
Adapter	3

## IMPORTANT NOTES:

- Familiarize yourself with the flow control valve on the pump, maximum (+) and minimum (-). This may need to be adjusted to achieve optimal water flow.
- Rattling noise inside the fountain? Due to the casting process, there may be loose pieces of casting material inside the fountain.
- The lights and light cables are rated for contact with water. Use care when handling the lights, jarring movements or dropping the lights may cause them to burn out prematurely.
- Do not use a high-pressure spray nozzle to fill the fountain as doing so may cause the paint to peel.
- **Max fill of fountain should always be below the exit point of the U bend.**
- An extra small adapter is included but not required for assembly. It may be used with a different fountain.

# ASSEMBLY



1. Remove the fountain lid.
2. Attach the LED light cable to the water pump.
3. Connect the straight water hose end and the hard plastic adapter to the pump and the flexible stacked water hose end and the barbed adapter to the LED light.
4. Place the pump into the fountain basin.
5. Fill the basin with enough water to keep the pump fully submerged during operation while being below the U bend exit point.
6. Reinstall the lid and plug the power cord into a properly grounded GFCI outlet.

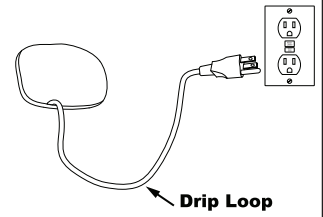
**NOTE:** When first plugged in, there may be air trapped in the pump.  
It may take several minutes for trapped air to escape, allowing water to flow.

## **!** WARNING:

Manufacturer and seller expressly disclaim any and all liability from personal injury, property damage or loss, whether direct or indirect, or incidental, resulting from the incorrect attachment, improper use, inadequate maintenance, or neglect of this product.

## ⚠ IMPORTANT SAFETY INFORMATION ⚠

- Fountains may splash or leak; always protect surfaces that can be damaged by water. Do not use fountain in areas that can be damaged if water splashes or leaks.
- Prevent water loss or damage to electrical sockets by ensuring the power cord has a drip loop; a diagram of a drip loop is shown on the right.
- Keep fountain out of reach of children and pets.
- Make sure the power cord is away from traffic areas.
- Keep power cord away from all heat sources. Do not use electrical cords in areas with high temperatures.
- Check the water level frequently to ensure the pump remains fully submerged; never allow the pump to run dry as it will burn out the motor.
- Always unplug the power supply before cleaning and maintaining the fountain and the pump.
- Always empty and store the fountain and pump indoors during freezing weather.



*Drawing is for visual reference only, power cord access and adapter vary by fountain.*

## Care & Maintenance

- Some splashing may occur; adjust the flow rate on the pump if the water rate is too low or too high.
- Some climates and weather conditions increase water evaporation, requiring water to be added more frequently. Frequently check water levels during times of high temperatures, wind, and long-term exposure to direct sunlight to ensure the pump remains underwater. Never allow the pump to run dry as it will burn out the motor.
- Only use water in this fountain. Distilled water will help prevent mineral buildup but is not required. Tap water is okay to use, but avoid heavily chlorinated water as it may damage the fountain finish and the pump.
- Over time, the finish may gradually mellow in color due to sun exposure; this is part of the natural aging process and is not cause for return.
- Periodically change the water to help keep the fountain and pump clean. Remove scale and buildup regularly.
  - DO NOT use harmful additives such as bleach, chlorine, etc.
  - DO NOT use anything that is abrasive to scrub the fountain.
  - DO NOT use a pressure washer to clean the fountain.
- Always unplug the power supply before cleaning and maintaining the fountain and the circulating pump. Take care when handling the pump; only pick it up by the body of the pump, never the power cord.
- During freezing weather, drain the fountain, disconnect the pump and store indoors; allowing ice to form may damage the fountain in such ways as, but not limited to, fountain cracking and permanent pump damage.

**WARNING:** THE ONE-YEAR WARRANTY DOES NOT COVER DAMAGES OR DEFECTS CAUSED BY THE APPLICATION OF CHEMICAL TREATMENTS, PROTECTIVE COATINGS, TOUCH-UP PAINT, OR CLEANING PRODUCTS.

## Troubleshooting

- If water is not flowing within several moments of the fountain being plugged in, ensure that the pump is fully submerged underwater. Add water to the reservoir if necessary. The pump may have air bubbles trapped inside, which can prevent water from circulating properly. Unplug the power supply for a few moments and plug it back in.
  - Check the flow control on the body of the pump, it may need to be adjusted to achieve the desired water flow rate.
  - Inspect the pump and tubing for obstructions.
  - Pump noise can be caused by trapped air, low water level, or the pump being too close to the sides of the fountain. Check the pump. If necessary, add water or moving the pump helps to reduce noise.
  - Ensure the light cables are fully connected to the light splitter, and the AC adapter is fully connected to the light splitter cable. If the lights are not working, ensure the cable is fully connected, and the seal is adequately tightened (do not over-tighten). Additionally, Make sure the light cord was not crushed during assembly.
  - Check to make sure the power outlet is working; consult a certified electrician if in doubt about electrical connections.
- If you experience issues with assembly or the product was damaged during transit, please contact our customer service team through one of the methods mentioned at the top of page 1. Please have the item number and order information ready to expedite response time.*

**Any modification to the product or failure to follow recommended care will void the product warranty.**

### ⚠ WARNING:

**Manufacturer and seller expressly disclaim any and all liability from personal injury, property damage or loss, whether direct or indirect, or incidental, resulting from the incorrect attachment, improper use, inadequate maintenance, or neglect of this product.**